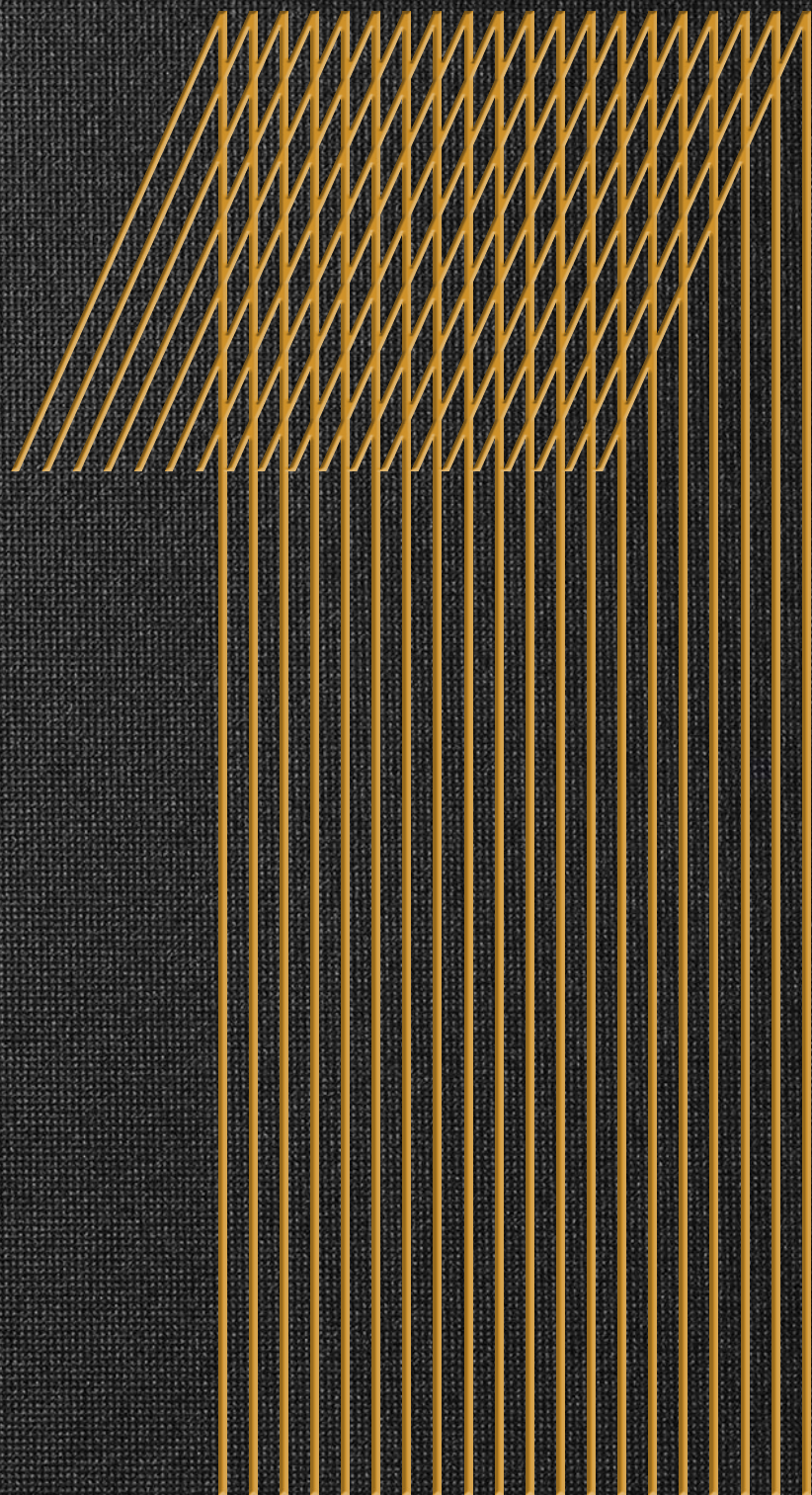


CHARLEMONT
SQUARE



CHARLEMONT SQUARE IS
REDEFINING URBAN MIXED-USE
DEVELOPMENT FOR DUBLIN.

A CITY CENTRE ADDRESS
COMBINING GRADE-A
OFFICE SPACE, RESIDENTIAL
ACCOMMODATION, RETAIL,
AND A VIBRANT PUBLIC REALM.



ONE

CHARLEMONT SQUARE

DUBLIN 2

WELCOME TO ONE
CHARLEMONT SQUARE,
A STUNNING 184,000 SQ FT
NEW HEADQUARTER OFFICE
BUILDING SET IN A NEW
LANDMARK DEVELOPMENT.



A DUBLIN DISTRICT WITH A BRIGHT FUTURE

CHARLEMONT SQUARE

ONE CHARLEMONT SQUARE

Located within the core Dublin 2 CBD, Charlemont Square will provide a unique and vibrant new quarter in a prime central location. The development provides 355,000 sq ft of office accommodation across two buildings with 30,000 sq ft of retail space and 280 apartments, offering occupiers a unique opportunity to live, work and socialise in this exciting location.



A NEW PUBLIC REALM FORMS THE FOCAL POINT FOR CHARLEMONT SQUARE



A DAY AND NIGHT DESTINATION



Vibrancy will be an integral part of the public realm space at Charlemont Square, with an open plaza area designed by leading landscape architects Cameo & Partners, creating a focal point of the development and offering a range of food and beverage outlets, as well as linking the leafy Grand Canal area with the action of the city centre. Charlemont Square will become a new city meeting place.

PERFECTLY POSITIONED TO
CREATE ENDLESS OPPORTUNITIES



CHARLEMONT SQUARE RETAIL UNITS

- A. CAFÉ
- B. GROCERY / CONVENIENCE
- C. RESTAURANT
- D. RETAIL
- E. RETAIL
- F. McCAULEY HEALTH & BEAUTY
- G. ATELIER MASER
- H. FOOD USE
- I. RESIDENTIAL CONCIERGE
- J. RETAIL
- K. COFFEE
- L. FOOD USE

TRANSPORT

- LUAS GREEN LINE
- DUBLIN BIKES
- DUBLIN BUS
- METRO (PROPOSED)



ONE

CHARLEMONT SQUARE
DUBLIN 2

AN IDEAL
WORKING
ENVIRONMENT

NINE FLOORS OF VERSATILITY

A building that has been designed to cater for modern occupiers needs, One Charlemont Square offers high-quality office accommodation that will create a perfect working environment for your teams.



- Double-height reception entrance
- 2 light-filled internal atria
- Rooftop terrace space
- High-quality tenant end-of-trip facilities
- Secure basement car parking
- 4 pipe fan coil air-conditioning
- Energy efficient LED lighting
- 6 x 17 and 2 x 21 high speed passenger lifts



A RECEPTION OF THE HIGHEST CALIBRE



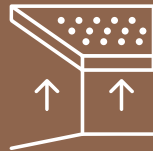
LARGE OPEN FLOORPLATES WITH GENEROUS 2.8M FLOOR-TO-CEILING HEIGHTS.



SUMMARY SPECIFICATION



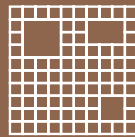
4 pipe fan coil air-conditioning



2.8m floor-to-ceiling height, 3.45m floor-to-ceiling at ground floor



150mm floor zone on Floors LGF-6, 300mm floor zone on Floor 7



9m x 9m structural grid



Sensor controlled LED lighting



Base Design Density of 1:8 sq m



6 x 17 person & 2 x 21 person high-speed passenger lifts



Charlemont Street

Terrace

Reception

Lower Ground Office

North Atrium

Showers & Changing

South Atrium

Bike Parking

Convenience Store

Car Parking

A SUSTAINABLY DESIGNED GRADE A,
ENERGY EFFICIENT OFFICE BUILDING.



GREEN CREDENTIALS

- Leed Gold
- Well Enabled
- Nearly Zero Energy Building

CONNECTED INFRASTRUCTURE

- WiredScore Platinum
- Digital Twin Management Platform
- Intelligent BMS

- High-performance thermal-glazed facade
- Green Roof
- Solar Reflective Roofing
- Native and adaptive vegetation reducing irrigation requirements
- Waste-management collection facilities to promote recycling and encourage landfill diversion
- Low-flow sanitaryware selected to reduce water use 35% below the LEED baseline
- All-electric air source heat pump – no fossil fuels
- Energy efficient sensor controlled LED lighting throughout
- Proximity to excellent public transport, local amenities and residential development
- Materials procured on basis of recycled content
- Use of Materials with Corporate Sustainability Reporting (CSRs)
- Regional materials prioritised
- EPD Compliant Materials
- Access to E-Car Spaces



HIGH-QUALITY END-OF-TRIP FACILITIES




22 INDIVIDUAL
SHOWER ROOMS



326 SECURE LOCKERS




2 DRYING ROOMS



259 BICYCLE
PARKING SPACES



BICYCLE REPAIR
STATION














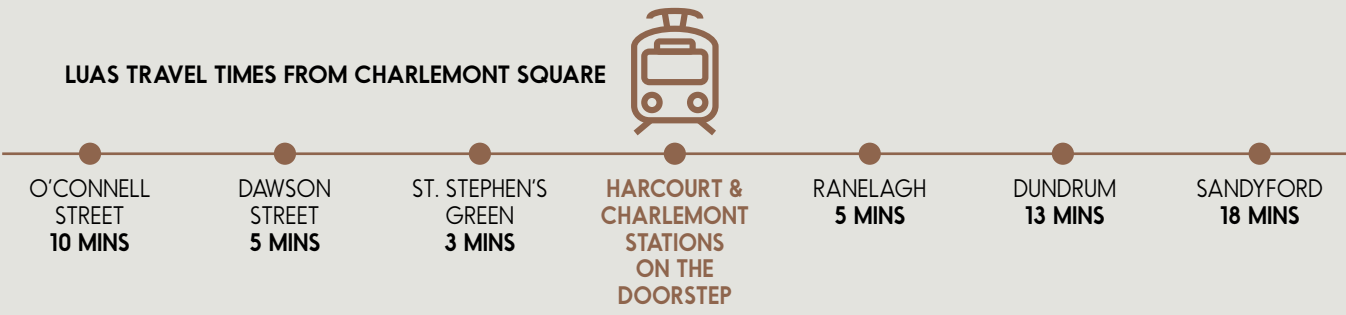
ACCESS TO 56 CAR
PARKING SPACES



TRANSPORT CONNECTIONS

Charlemont Square has a range of transportation options in its immediate area. Most conveniently, it is located a couple of minutes' walk from both Harcourt Street and Charlemont Luas Stations which provides a connection point to the wider Dublin transportation links. The proposed new MetroLink will also be available at Charlemont by 2027, providing airport access within 20 minutes.

TRANSPORT	LOCATION	WALKING TIME	DISTANCE
 LUAS GREEN LINE	CHARLEMONT	4 MINS	350M
 LUAS GREEN LINE	HARCOURT	3 MINS	200M
 LUAS RED LINE	ABBEY STREET	24 MINS	1.9KM
 DUBLIN BIKES	CHARLEMONT	3 MINS	260M
 CANAL WAY CYCLE ROUTE	CHARLEMONT	3 MINS	260M
 DUBLIN BUS	CHARLEMONT ST	1 MIN	50M
 DART	PEARSE STN	25 MINS	1.9KM
 AIRCOACH BUS	LEESON ST	11 MINS	850M
 AIRLINK BUS	CHARLOTTE WAY	4 MINS	300M
 DOCKLANDS STN	SHERIFF ST	40 MINS	3.2KM
 METRO (PROPOSED)	CHARLEMONT	4 MINS	350M



THE NEW PLACE TO BE IN THE CITY CENTRE



The development perfectly merges some of Dublin's coolest living addresses; Ranelagh, Rathmines and Portobello, alongside the core Dublin 2 office locations and the city's leading social districts.

A DYNAMIC CITY, ALIVE WITH OPPORTUNITY



DUBLIN OFFERS WORLD-CLASS RETAIL, THE FINEST ARTS & ENTERTAINMENT AND THE BEST IN INTERNATIONAL DINING





A PROVEN
LOCATION
FOR
WORLD-CLASS
BUSINESSES

1. Indeed
2. Iconic Offices
3. KPMG
4. Byrne Wallace
5. Hedgeserv
6. JLL
7. L'Oreal
8. Cargurus
9. Horizon Pharma
10. AerCap
11. Permanent TSB
12. EY
13. Dropbox
14. Aviva
15. Regus
16. Mazars
17. Bank of America
18. IDA
19. Maples
20. Santander
21. Deloitte
22. Eversheds
23. BioMarin
24. Mercer
25. AON
26. SEAI
27. Arthur Cox
28. WeWork
29. Iconic Offices
30. National Transport Authority
31. AIB
32. Intercom
33. MetLife
34. Amazon
35. LinkedIn
36. Department of Communications
37. Marsh
38. Zendesk
39. Viasat
40. WeWork
41. Bank of Ireland
42. Bank of Ireland
43. AIB
44. Amazon
45. Wrike
46. CIF

OFFICE ACCOMMODATION

NET INTERNAL FLOOR AREAS	SQ M	SQ FT
7th Floor	1,765	18,998
6th Floor	2,231	24,014
5th Floor	2,231	24,014
4th Floor	2,325	25,026
3rd Floor	2,325	25,026
2nd Floor	2,325	25,026
1st Floor	2,283	24,574
Ground Floor	848	9,127
Lower Ground Floor	720	7,750
Total	17,053	183,555



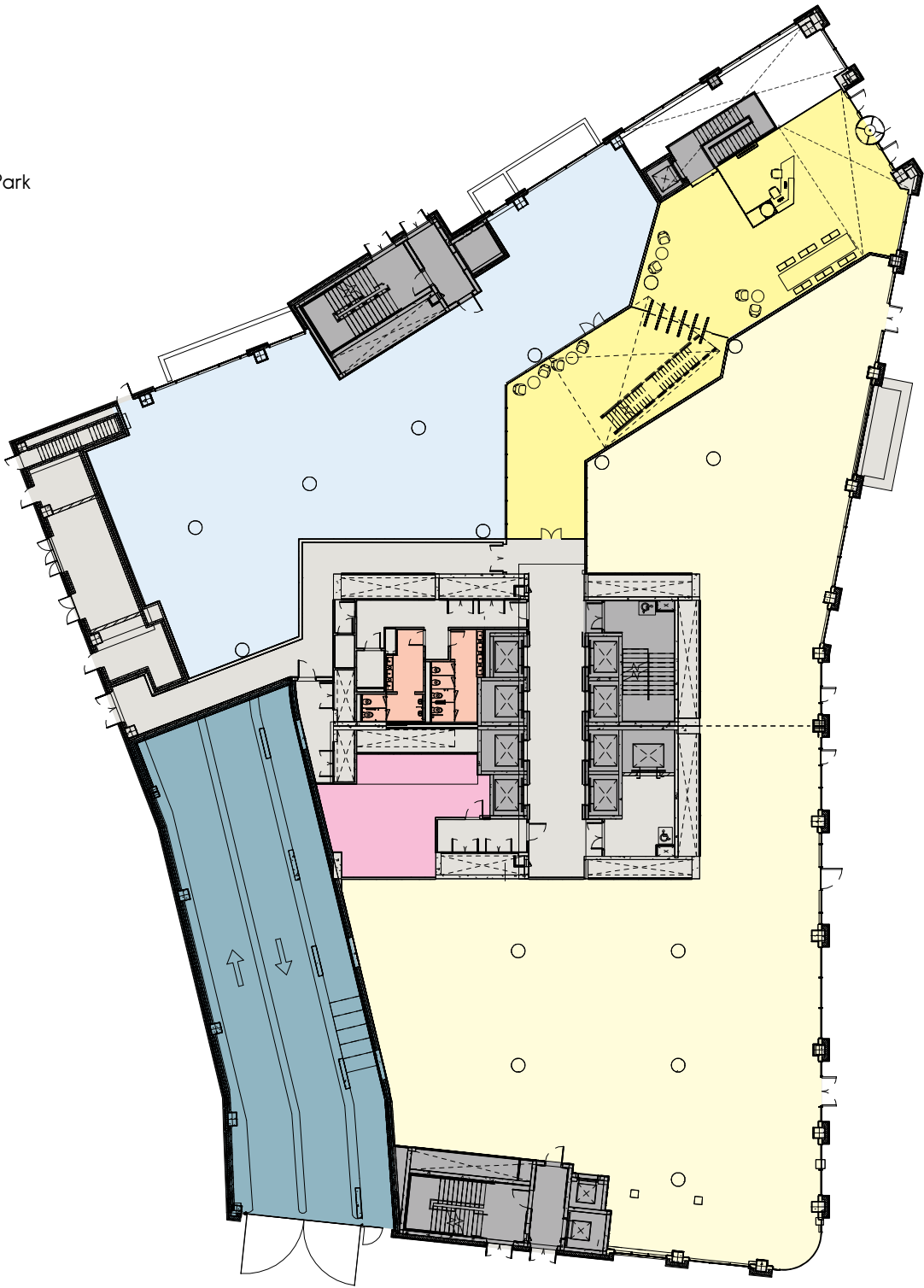
FLOOR PLANS

GROUND

848 sq m / 9,127 sq ft

Reception	287 sq m / 3,089 sq ft
Office	495 sq m / 5,328 sq ft
Storage	66 sq m / 710 sq ft

- Offices
- Reception
- Core
- Lift/Stairs
- Toilets
- Store
- Ramp to Car Park
- Retail

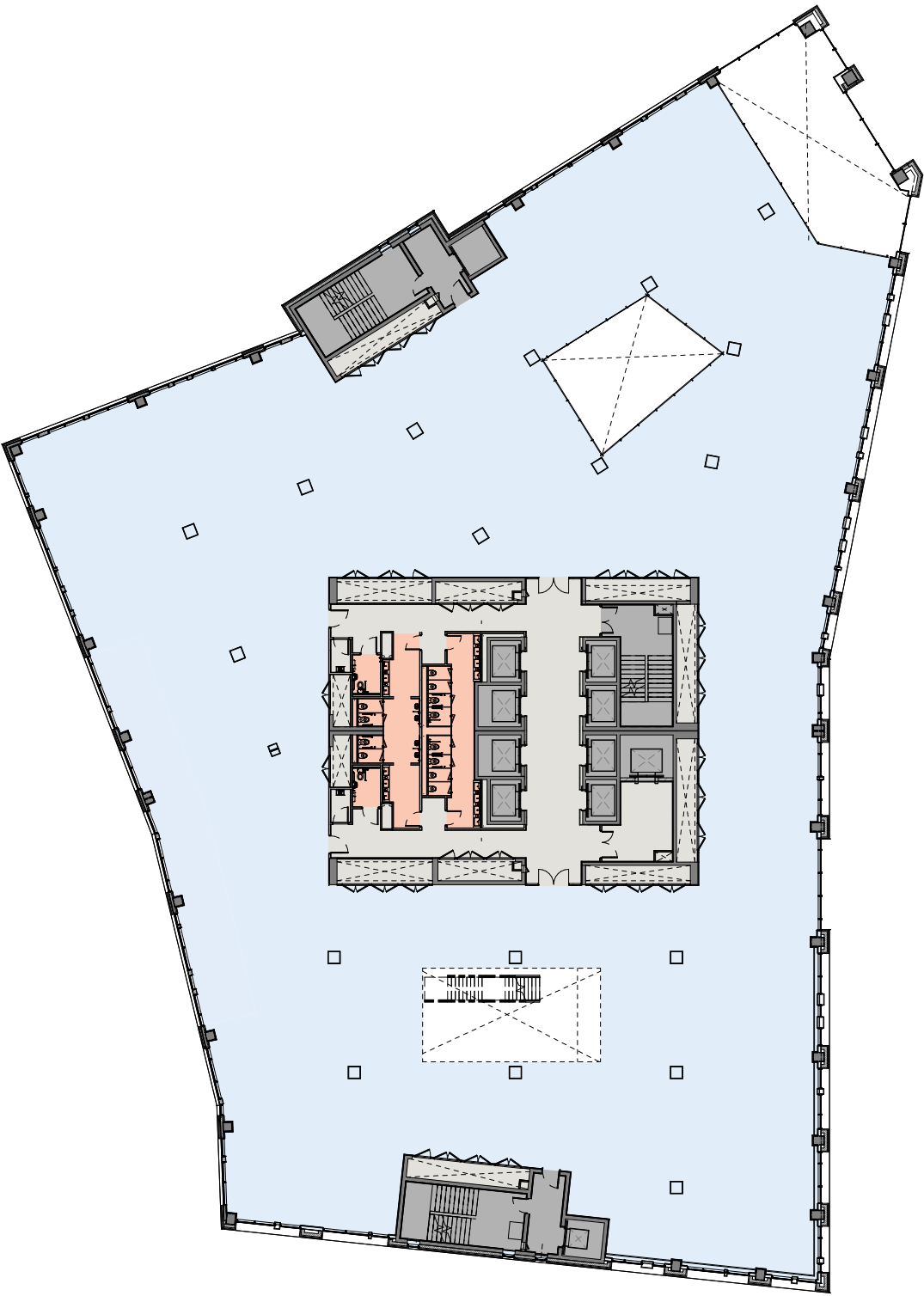


Note: Atria Staircase – Tenant Fit-Out Item

FIRST FLOOR

2,283 sq m / 24,574 sq ft

- Offices
- Core
- Lift/Stairs
- Atrium
- Toilets



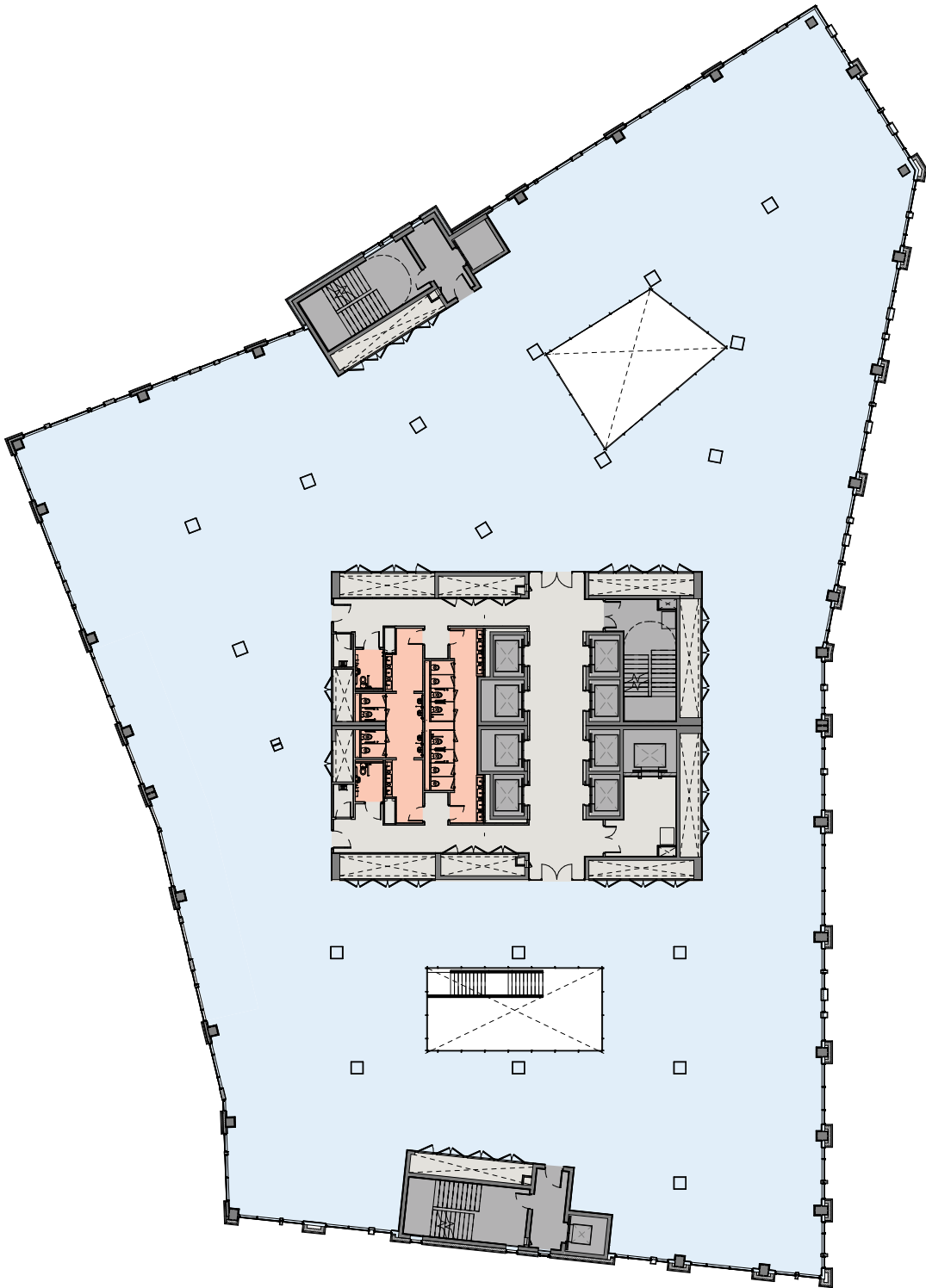
Note: Atria Staircase – Tenant Fit-Out Item

FLOOR PLANS

SECOND FLOOR

2,325 sq m / 25,026 sq ft

- Offices
- Core
- Lift/Stairs
- Atrium
- Toilets

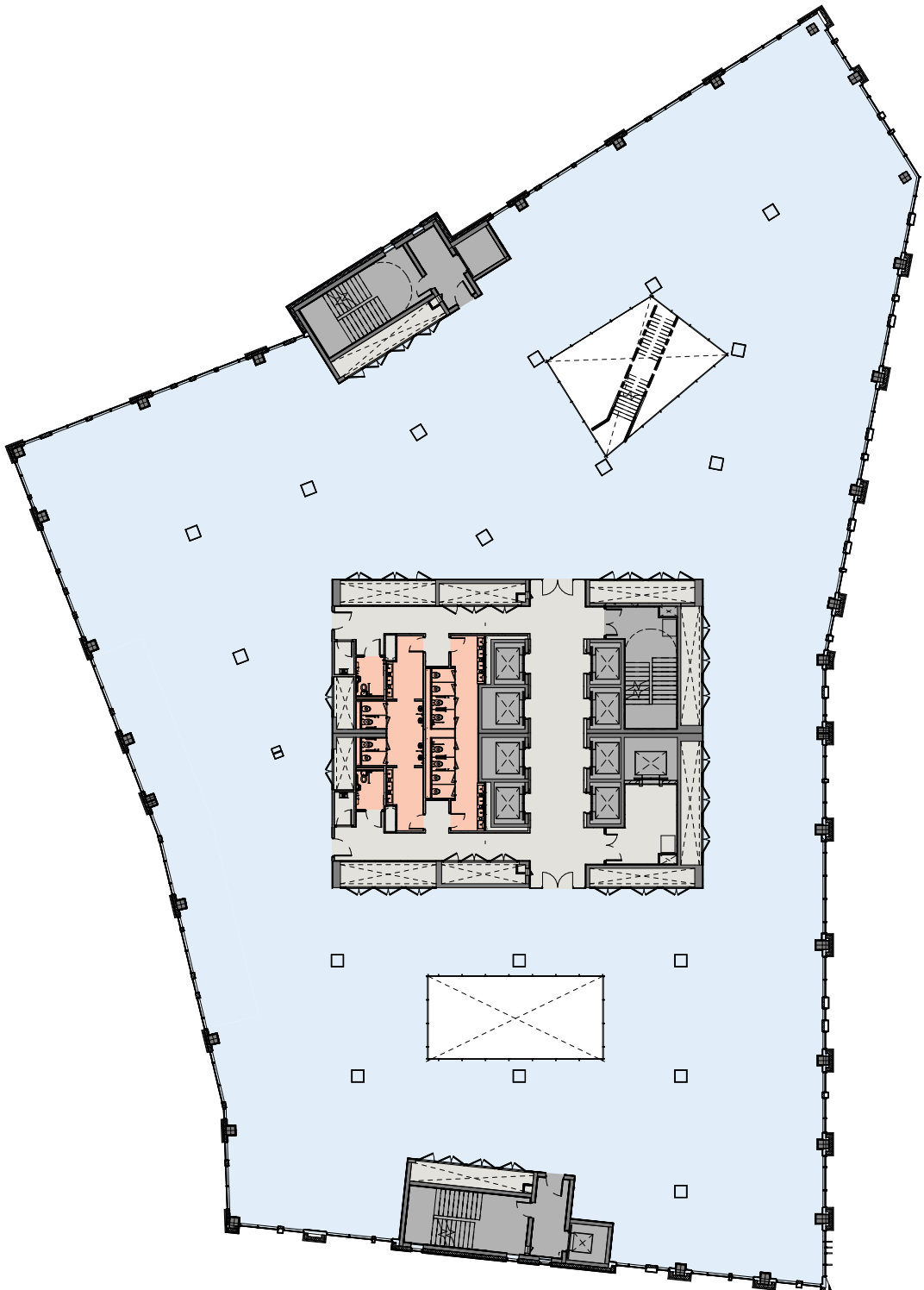


Note: Atria Staircase – Tenant Fit-Out Item

THIRD FLOOR

2,325 sq m / 25,026 sq ft

- Offices
- Core
- Lift/Stairs
- Atrium
- Toilets



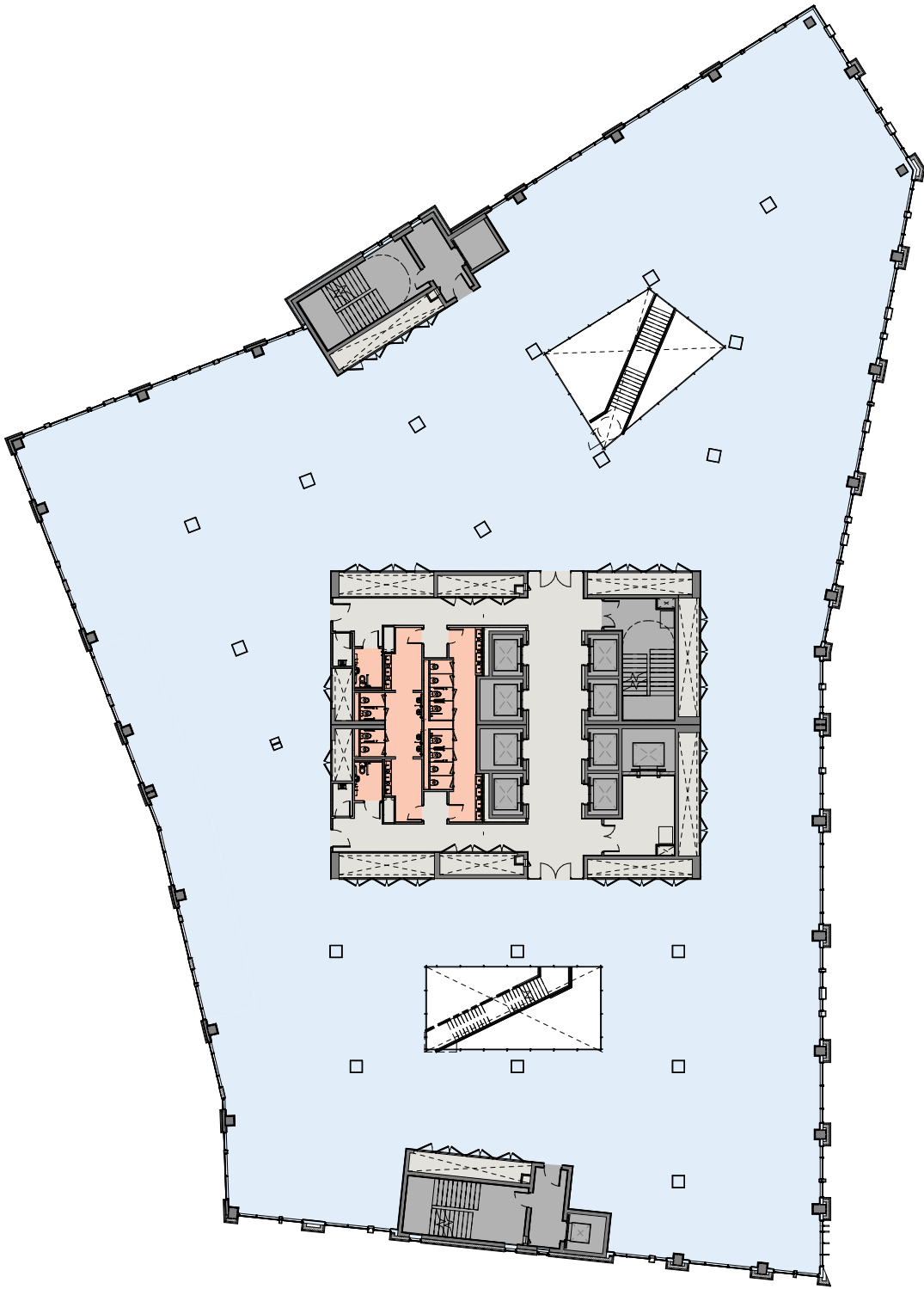
Note: Atria Staircase – Tenant Fit-Out Item

FLOOR PLANS

FOURTH FLOOR

2,325 sq m / 25,026 sq ft

- Offices
- Core
- Lift/Stairs
- Atrium
- Toilets

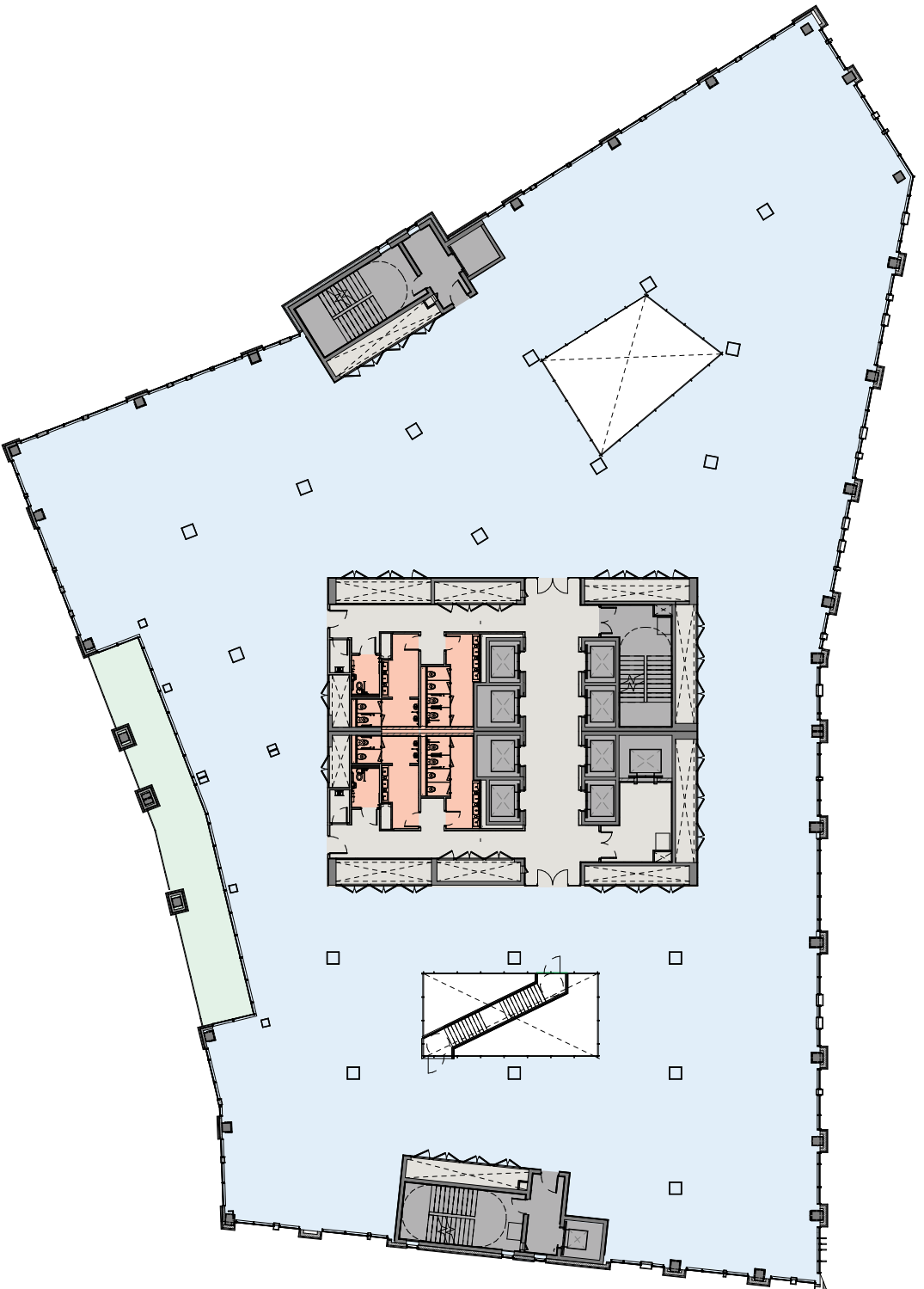


Note: Atria Staircase – Tenant Fit-Out Item

FIFTH FLOOR

2,231 sq m / 24,014 sq ft

- Offices
- Core
- Lift/Stairs
- Atrium
- Toilets



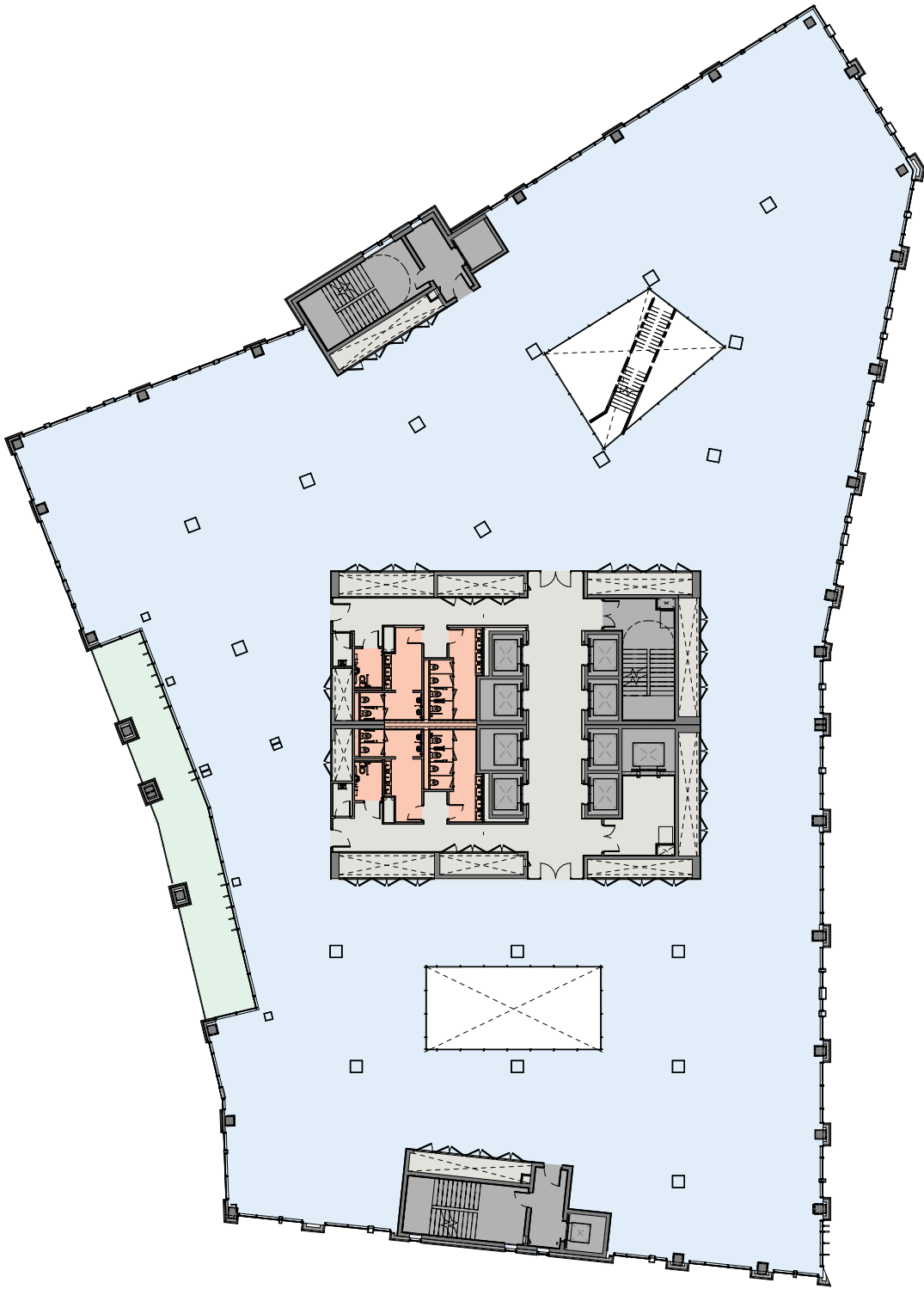
Note: Atria Staircase – Tenant Fit-Out Item

FLOOR PLANS

SIXTH FLOOR

2,231 sq m / 24,014 sq ft

- Offices
- Core
- Lift/Stairs
- Atrium
- Toilets



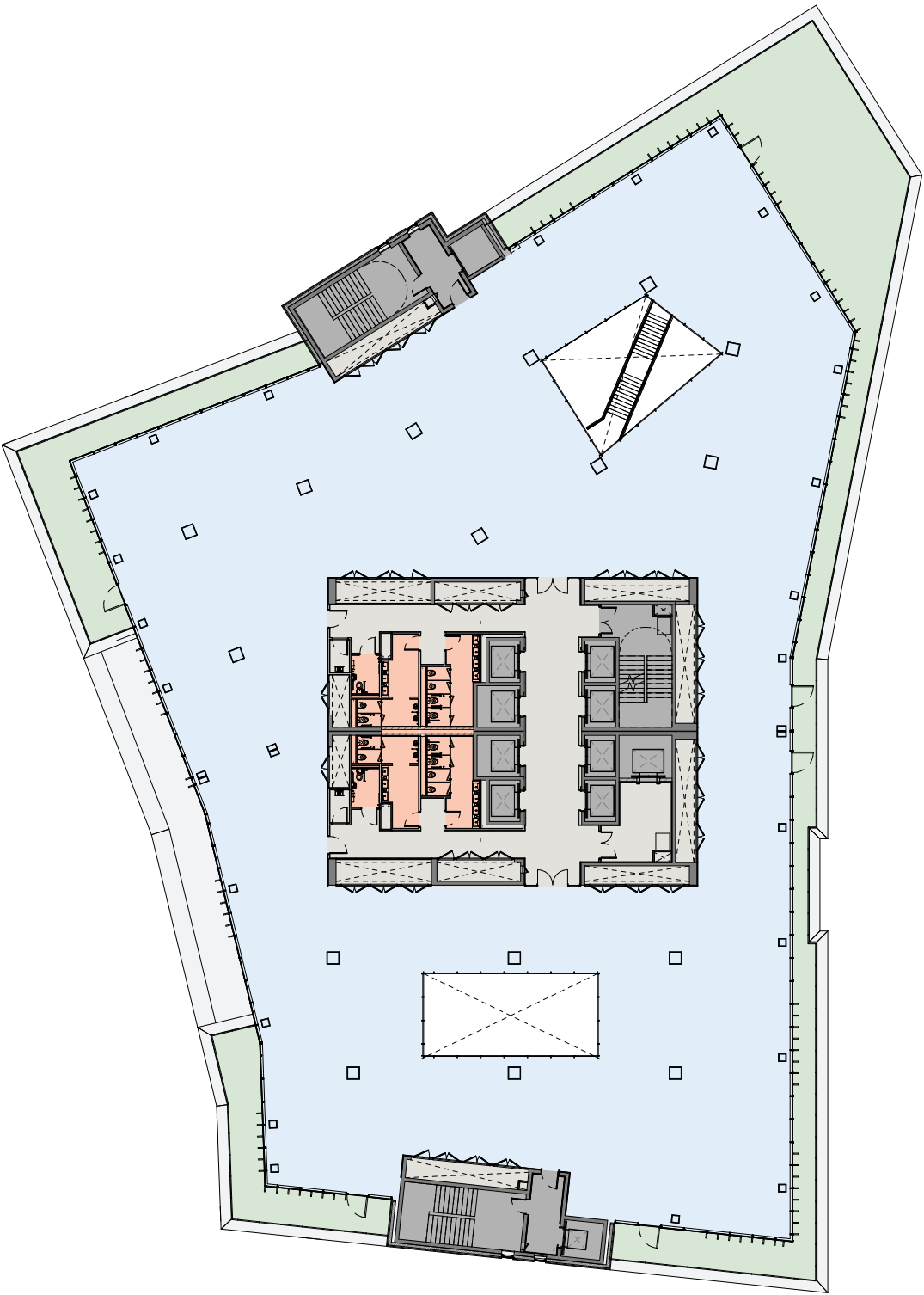
Note: Atria Staircase – Tenant Fit-Out Item

SEVENTH FLOOR

1,765 sq m / 18,998 sq ft

Terrace 400 sq m / 4,305 sq ft

- Offices
- Terrace
- Core
- Lift/Stairs
- Atrium
- Toilets



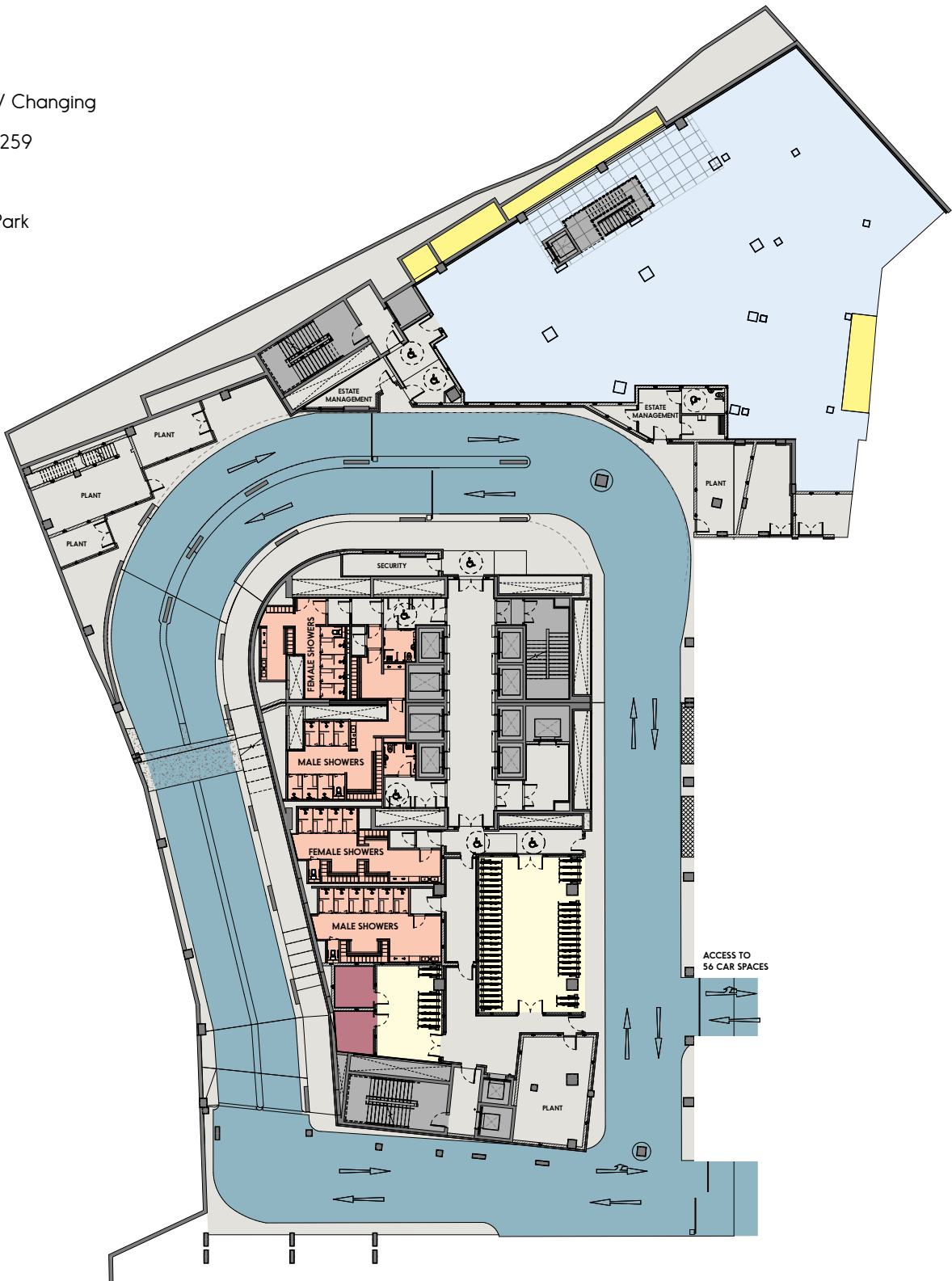
Note: Atria Staircase – Tenant Fit-Out Item

FLOOR PLANS

LOWER GROUND

720 sq m / 7,750 sq ft

- Offices
- Light well
- Lift/Stairs
- Core
- Showers x 22 / Changing
- Bike Parking x 259
- Drying Room
- Ramp to Car Park



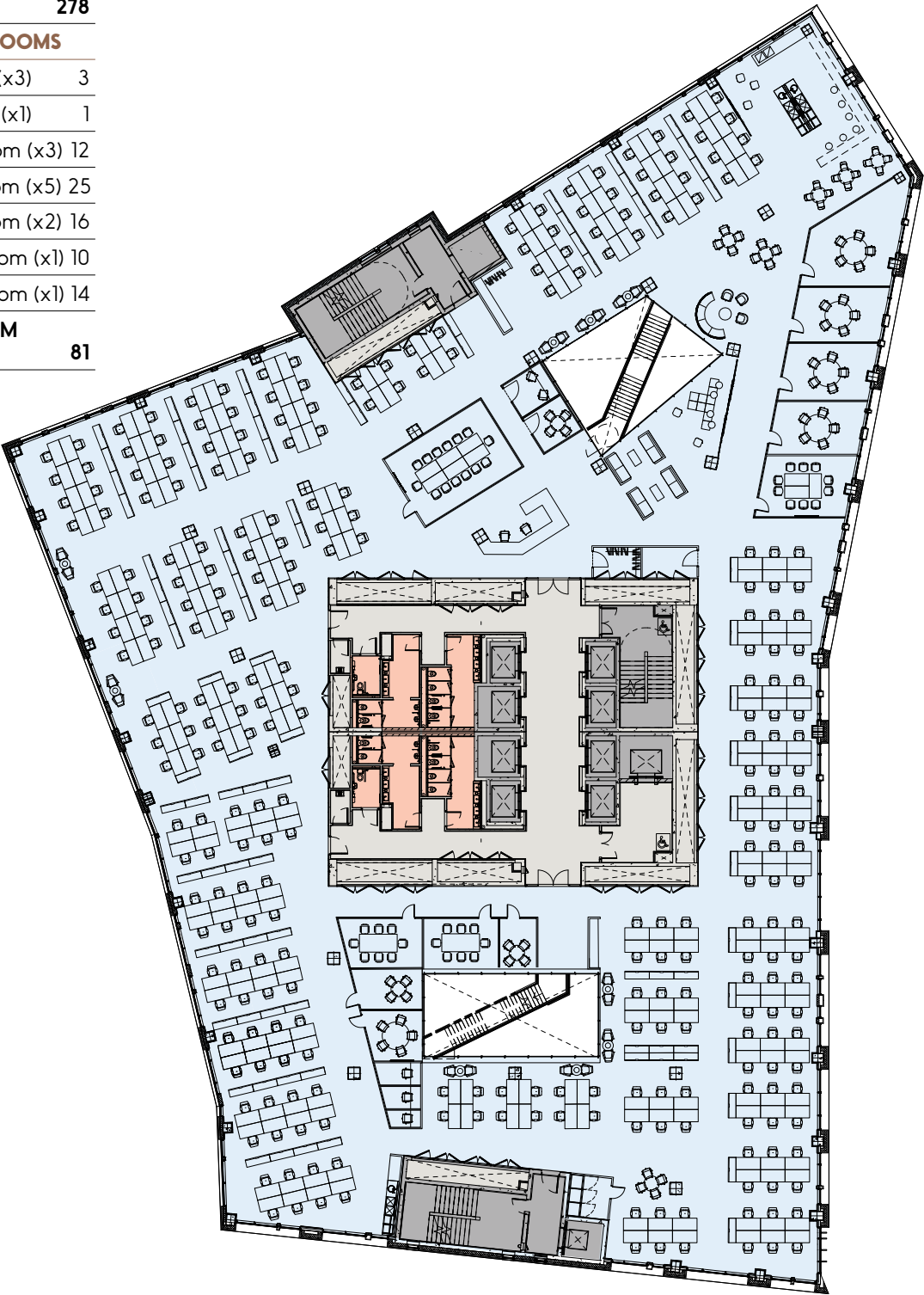
Note: Atria Staircase – Tenant Fit-Out Item

SPACE PLANS

Open-Plan Test Fit

1:8 sq m | 2,325 sq m

TECHNICAL OFFICES	
Open Plan Workstations	278
TOTAL HEADCOUNT	278
INTERNAL MEETING ROOMS	
1 Seater Quiet Room (x3)	3
2 Seater Quiet Room (x1)	1
4 Seater Meeting Room (x3)	12
5 Seater Meeting Room (x5)	25
8 Seater Meeting Room (x2)	16
10 Seater Meeting Room (x1)	10
14 Seater Meeting Room (x1)	14
TOTAL MEETING ROOM SEAT COUNT	81



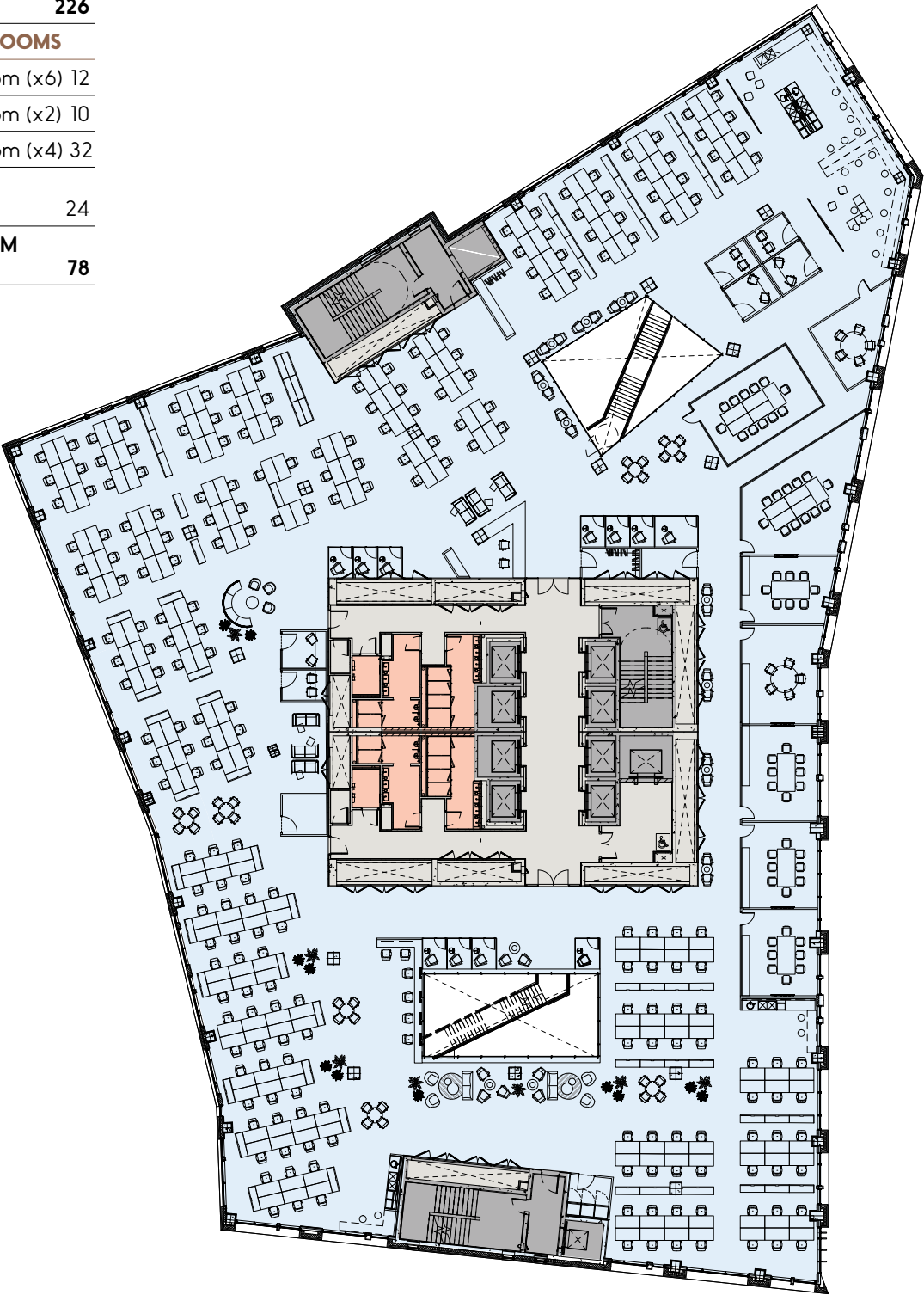
Note: Atria Staircase – Tenant Fit-Out Item

SPACE PLANS

Technology Test Fit

1:10 sq m | 2,325 sq m

TECHNICAL OFFICES	
Open Plan Workstations	226
TOTAL HEADCOUNT	226
INTERNAL MEETING ROOMS	
2 Seater Meeting Room (x6)	12
5 Seater Meeting Room (x2)	10
8 Seater Meeting Room (x4)	32
12 Seater Meeting Room (x2)	24
TOTAL MEETING ROOM SEAT COUNT	78



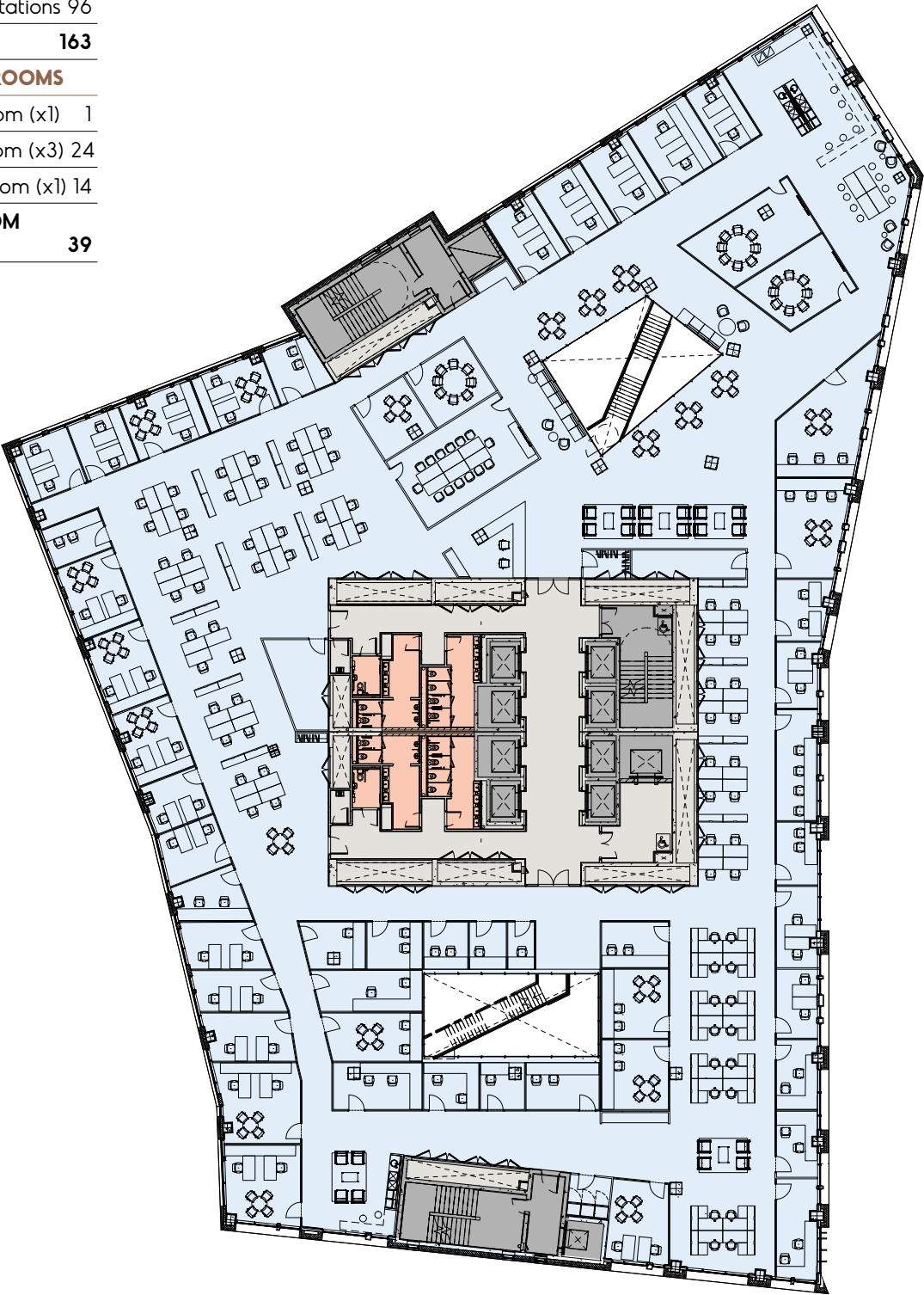
Note: Atria Staircase – Tenant Fit-Out Item

SPACE PLANS

Cellular Test Fit

1:14 sq m | 2,325 sq m

TECHNICAL OFFICES	
Open Plan Workstations	67
Cellular Office Workstations	96
TOTAL HEADCOUNT	163
INTERNAL MEETING ROOMS	
4 Seater Meeting Room (x1)	1
8 Seater Meeting Room (x3)	24
14 Seater Meeting Room (x1)	14
TOTAL MEETING ROOM SEAT COUNT	39



Note: Atria Staircase – Tenant Fit-Out Item

DETAILED SPECIFICATION

Architectural Specification	
BUILDING DIMENSIONS	
Structural Grid	9m x 9m grid typically.
Planning Module	1.5m square generally throughout.
Floor Heights (Approximate)	Office floor-to-floor (Ground to First) 4.53m
	Office Floor-to-ceiling (Ground) 3.45m
	Office floor-to-floor (Typical) 3.85m
	Office floor-to-ceiling (Typical) 2.80m
	Raised access floor zone (Typical) 150mm
	Raised access floor zone (7th level) 300mm
	Ceiling Service Zone 450mm
Structural System	Reinforced concrete slab with reinforced concrete columns.
General Occupancy	Building services to accommodate 1 occupant per 8.0 sq m.
Means of Escape	1 occupant per 6.0 sq m.
Sanitary Accommodation	1 occupant per 8m² with 60 / 60 ratio of male / female toilets.
Reception Finishes	
Ceilings	Ceilings to be formed with Gypsum ceiling system, with LED lighting throughout. All ceilings to have stepped floating bulkhead edge detail.
Wall Finishes	Reception walls to be clad with natural stone and feature real wood Veneer Panelling. Walls to be finished with Gypsum Dri-Wall system.
Doors	Doors to be single or double-leaf white veneer hardwood solid core flush panel with high-quality hardwood frames to match door veneer. Associated ironmongery to be high quality brushed stainless steel.
Reception Desk	Bespoke reception desk/ joinery to reception.
Floor Finishes	Ceramic tiled flooring (600x600) with matching grouted joints. Inset heavy duty matting to entrance within stainless steel matwell frame.
Lift Lobby Finishes	
Ceilings	Ceilings to be formed with Gypsum ceiling system, with LED lighting throughout. All ceilings to have stepped floating bulkhead edge detail.
Wall Finishes	Walls generally will be finished in Gypsum Dri-Wall system. Stone cladding with sundry architectural features to office lift lobby walls on all floors. Stainless steel architraves and over panels to lift door openings.
Doors	Full-height glazed doors and side lights to office entrances from core. Secondary doors will be single, door and a half or double-leaf white painted veneer hardwood solid-core flush panel. Associated ironmongery will be high-quality brushed stainless steel.
Floor Finishes	Ceramic tiled flooring (600x600) with matching grouted joints.

Toilets	
Ceilings	Ceilings to be formed with Gypsum ceiling system or equal approved. LED lighting throughout. Ceilings to have stepped floating bulkhead edge detail.
Lobby Doors	Doors to be single or double leaf white veneer hardwood solid-core flush panel with high-quality hardwood frames. Associated ironmongery will be high quality brushed stainless steel.
Toilet Cubicles	Cubicles to be proprietary toilet cubicle system or Venesta with a selected laminate / veneer finish to doors. Ironmongery to be high-quality brushed stainless steel.
Sanitary Ware & Fittings	
<ul style="list-style-type: none">Wall mounted toilets with concealed cisterns, washbasins with infrared taps and urinals.Inset hand dryers and /or towel dispensers, soap dispensers, SS bin chutes, flush plates & urinal flush sensor controls to be provided.Natural Stone vanity unit with under counter waste disposal to be provided.Mirrors to be fitted over washbasins.Built in paper towel dispensers, towel bins and associated fittings to be provided.	
Floor Finishes	Large format fully-vitrified porcelain 600 x 600mm ceramic tiles with matching grouted joints.
Wall Finishes	600 x 300mm ceramic tiles with matching grout.
Cleaner's Store	Cleaner's store to be provided on all above-ground levels.

Internal Finishes – Main Core	
Walls	Walls generally will be finished in Gypsum Dri-Wall system.
Floors	Stair Cores: carpet tile or equal approved.
Ceilings	Ceilings to be formed with Gypsum ceiling system with LED lighting throughout.
Balustrade	Balustrades to consist of stainless steel posts and glass infill panels, stainless steel handrails.
Atrium Finishes	
Atrium Glazing	Two atria are provided on a typical office plate, serving to provide natural daylight into the office environment. Clear fire-rated glazing to atriums. Aluminium spandrel at floor junctions.
Internal Office Area Finishes	
Ceilings	<ul style="list-style-type: none">Armstrong / SAS powder coated metal suspended ceiling throughout with exposed grid.White lay-in perforated metal ceiling tiles complete with Class 0 wrapped mineral wool acoustic pads to 80% of area (20% assumed open for return air).Armstrong Dune regular edge fibre lay-in ceiling tiles, 600 x 600 x 8mm on standard Armstrong exposed suspension grid or equal approved.Plasterboard bulkheads to perimeter windows and wall abutments and edge conditions.

Wall Finishes	<ul style="list-style-type: none">Walls to be finished with Gypsum Dri-Wall system and skim and taped and fill finished.Proprietary corner beads/ plaster stop to be fitted at external corners, movement joints and changes in wall construction where necessary.Walls to be prepared and painted three coats of white silk emulsion.Walls to have MDF skirting with emulsion paint finish.
Doors	Doors to be either single or double leaf white veneer painted hardwood solid core flush panel with high-quality hardwood frames. Associated ironmongery to be high-quality brushed stainless steel.
Raised Access Floor	<ul style="list-style-type: none">Floors to be a proprietary medium grade encapsulated chipboard raised access floor of 150mm depth, Kingspan Torlock PSA or equal approved.Floor tiles to be screw-down type metal clad tiles capable of carrying UDL of 8.0kN/m², and point load of 3.0kN over 25mm square.
External Finishes – Elevations and Roof	
Portuguese Limestone Cladding	<ul style="list-style-type: none">External cladding to be Portuguese Limestone panels fixed to steel cladding rail system or equal approved.System to incorporate EPDM and rigid insulation.Wall build-up to achieve a U-value in compliance with Building Regulations Part L/nZEB.

Curtain Wall System	Curtain walling to be thermally broken structural glazed stick system. Glazing to consist of toughened low-iron float glass. All edge fixings to be concealed at junctions with cladding material. System to be installed with U-value in compliance with Building Regulations Part L.
Glazed Balustrades to Terraces	Balustrades consisting of stainless steel rails and posts, and glass infill panels to be provided to external terraces.
Roof Grass and Planting	Where planting zones indicated on roof design drawings, Sedum or equal approved system to be installed. System to be installed with a U-value in compliance with Building Regulations Part L/nZEB.

Underground Car Park	
Parking	<ul style="list-style-type: none">56 car parking bays.Designated parking bays for wheelchair users.External lighting to be provided to all areas consistent with safety and security requirements.Automatic vehicle barriers to be provided at car park entry/ exit points. Speaker boxes to be provided at each barrier and wired to security hut.


Secure Bike Storage and Lockers	Secure bicycle and locker storage to be provided in selected locations throughout basement level -1.
<ul style="list-style-type: none">259 bicycle spaces.326 lockers.	

DETAILED SPECIFICATION

Shower and Changing Facilities	Mechanical and Electrical Services
Ceilings Ceilings to be formed with Gypsum ceiling system or equal approved with LED lighting throughout. Ceilings to have stepped floating bulkhead edge detail.	MECHANICAL INSTALLATION Heating and Cooling Installation The primary heat source to serve the proposed office building will be from 3 No. high efficiency 4-pipe air source heat pumps located at roof level. These shall serve an energy centre within the block located at basement -2 level. LPHW (low pressure hot water) will be circulated and distributed up throughout Block 1 via individual risers. Heating to all tenant areas will be provided by 4-pipe fan coil units (FCUs). The heating centres will also serve heat emitters throughout the landlord areas and the air handling units (AHUs).
Lobby Doors Doors to be single or double leaf white veneer hardwood solid core flush panel with high quality hardwood frames. Associated ironmongery will be high-quality brushed stainless steel.	Ventilation Installation Fresh air shall be provided to the building via 4 No. supply and return air handling units complete with high efficiency heat recovery. These shall be located at basement -2 level. 2 No. separate air handling units with heat recovery shall be provided to serve the central toilet cores & basement shower/ changing areas. Space allowance within services risers and at roof level shall be provided for future tenant plant. The basement car park shall be fully mechanically ventilated.
Shower Cubicles Cubicles to be proprietary toilet cubicle system or Venesta with a selected SCL laminate / glass door system. Full-height drylined partitions with ceramic tiles. Ironmongery to be high-quality brushed stainless steel.	Domestic Water Services Installation 24-hour cold-water storage shall be provided. Water shall be stored at basement -2 level in insulated GRP tanks and shall be boosted under pressure to serve all levels. Domestic hot water storage shall be provided based on peak demand. Domestic hot water shall be heated via high temperature heat pumps. Each tenant office space shall be provided with a boosted meter supply for future fit-out.
Sanitary Ware and Fittings <ul style="list-style-type: none">• Wall-mounted toilets with concealed cisterns, washbasins with infrared taps and urinals to be of high-quality and designed for low water-consumption.• Inset hand dryers and /or towel dispensers, soap dispensers, SS bin chutes, flush plates & urinal flush sensor controls to be provided.• Natural Stone vanity unit with under-counter waste disposal to be provided.• Mirrors to be fitted over washbasins.• Built-in paper towel dispensers, towel bins and associated fittings to be provided.	
Floor Finishes Large format fully vitrified porcelain 600 x 600mm ceramic tiles with matching grouted joints.	
Wall Finishes 600 x 300mm ceramic tiles with matching grout where specified.	
Drying Rooms Separate drying rooms for male and female areas.	

ELECTRICAL INSTALLATION Power Distribution All landlord services shall be designed to achieve a minimum A3 BER rating and LEED Gold classification. A double ESB substation will be provided for Landlord and Tenant supplies. General Power Services sub distribution boards will be provided in each tenancy on each level. Power provisions in the tenancy areas will be supplied from an underfloor busbar system.
Communication Services There shall be a minimum of 3 routes into the common basement which shall have containment routes to the Block 1 main comms room. Each route will have spare capacity to allow for the option of additional IT service providers in the future. WiredScore Platinum will be achieved.
Lighting Services Recessed energy efficient LED luminaires will be provided on a 600 x 600mm modular layout to provide lighting levels in accordance with the SLL Code for Offices. The office lighting will be controlled based on occupancy and daylight. This system will be programmable for future tenants and fit-outs.
Vertical Transportation <ul style="list-style-type: none">• Manufacturer: Kone.• Six 17 person lifts & Two 21 person high speed passenger lifts to be provided in the primary core.• Dedicated goods lift to be provided in the primary core.• 2.4m high doors, 2.5m high lift cars.• One Fire-fighting lift to the southern core.

PROFESSIONAL TEAM

 ARCHITECTS Henry J Lyons	 CIVIL/STRUCTURAL ENGINEERS CS Consulting Group	 FAÇADE CONSULTANT Murphy Façade Studios
 MAIN CONTRACTOR JJ Rhatigan	 M&E CONSULTANT O'Connor Sutton Cronin	 LANDSCAPE ARCHITECTS Cameo and Partners
 PROJECT MANAGER KMCS	 FIRE SAFETY & ACCESS CONSULTANTS Maurice Johnson & Partners	 ASSIGNED CERTIFIERS i3PT
 QUANTITY SURVEYOR Buildcost	 HEALTH & SAFETY CONSULTANT Ashview Consultants	 BIM CONSULTANCY Invicara

DEVELOPER



McGarrell Reilly Group is a privately owned property group that has created some of the highest quality developments in Ireland, the UK and Germany. This group prides itself on the quality of their portfolio and constantly strives to add value to each of their projects.

Successfully operating for almost 40 years, some of McGarrell Reilly Group's best-known developments / refurbishments / investments include: The Sharp Building, Iveagh Court Complex, Dublin 2; The Watermarque Building, Dublin 4; 25-28 Adelaide Road, Dublin 2; Malahide Marina, Co. Dublin; CityNorth Business Campus on the M1 Motorway outside Dublin; and Spitalerhof in Hamburg.

Over the past 39 years, McGarrell Reilly Group has successfully worked with top blue-chip companies to design and build office properties to suit their specific local requirements while meeting their worldwide standards of excellence. McGarrell Reilly Group are proud to count several leading international companies and institutions as clients: Perrigo, Marsh, Mercer, Pfizer, State Street, Cisco, Airbnb, Betfair, Aon, Office of Public Works (Irish Government), Central Bank of Ireland, various embassies, Jack & Jones and New Yorker, to name but a few.

www.mcgarrellreilly.ie

"McGarrell Reilly demonstrated their flexibility and experience in working closely with our professional team to design and build our Irish Headquarters at Iveagh Court. The building was tailored to meet the high international occupational requirements and specific local requirements of our business. The office exceeded our expectations and has served the continued success of our business for the past 15 years."

**Tom Geraghty, Chairman of MMC
(Marsh & McLennan Companies) in Ireland**



JOINT AGENTS



+353 1 618 1300
savills.ie

LRN: 002233

Seán Ryan McCaffery
sean.ryanmccaffrey@savills.ie

Andrew Cunningham
andrew.cunningham@savills.ie



+353 1 673 1600
jll.ie

LRN: 002273

Deirdre Costello
deirdre.costello@eu.jll.com

Rita Carney
rita.carney@eu.jll.com

www.charlemontsquare.com

These particulars are issued by Savills and JLL on the understanding that all negotiations are conducted through them. Whilst every care has been taken in the preparation of these particulars, they do not constitute an offer or contract. All descriptions, dimensions, references to condition, permissions or licences of use or occupation, access and other details are for guidance only, they are given in good faith and are believed to be correct, and any intending purchaser / tenant should not rely on them as statements or representation of fact but should satisfy themselves (at their own expense) as to the correctness of the information given. Prices are quoted exclusive of VAT (unless otherwise stated) and all negotiations are conducted on the basis that the purchaser / lessee shall be liable for any VAT arising on the transaction. Savills and JLL nor any of their employees have any authority to make or give any representation or warranty in respect of this property.

www.charlemontsquare.com

